



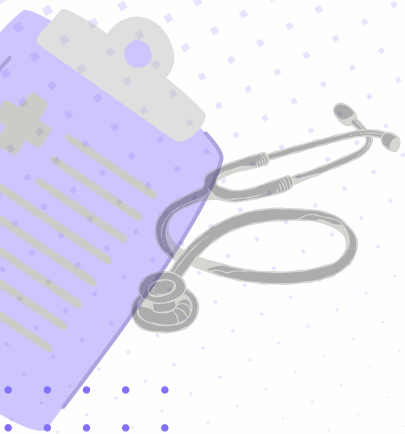
Accuryn Medical AKI CMS FACT SHEET



Acute Kidney Injury (AKI) is now a CMS hospital harm reportable

Hospital Inpatient Quality Reporting Program

- CMS collects quality data from hospitals under IPPS.
- Hospitals not meeting IQR requirements face a one-fourth reduction in their Annual Payment Update.
- CMS proposes increasing eCQMs from six to eleven over few years, including AKI.



AKI REPORTING

- **2025:** AKI considered a Hospital Harm, reportable in eCQM.
- **2028:** AKI required to be reported in eCQM. **NOTE:** Experts suggest that hospitals should initiate planning and testing to collect data now in preparation for the required data submission in 2028

Patient Safety

- **Goal:** Improve patient safety and prevent moderate-to-severe AKI.
- **AKI incidence:** ~45-50% among critically ill patients, linked to higher morbidity and mortality.¹

eCQM Reporting Requirements:

- **2026:** Three self-selected eCQMs + Safe use of opioids, Cesarean birth, Severe obstetric complications, severe Hypoglycemia and Hyperglycemia.
- **2027:** Adds Opioid-related adverse events
- **2028:** Adds Pressure Injury, **Acute Kidney Injury**²

Support:

- **Policy:** Education on updated eCQM reporting (1 CE credit).
- **Practice:** Training and support on early AKI detection.
- **Product:** Accuryn may provide early AKI detection (up to 12 hours for AKI Stage one and 33 hours for AKI Stage 2 earlier than sCr), EMR connectivity, and CAUTI risk reduction.³

ACCURYN MEDICAL CAN HELP YOU PREPARE FOR THESE CHANGES.

*NOTE: CMS defines AKI Stage 2 or greater as either "a substantial increase in serum creatinine value" or "the initiation of kidney dialysis." In this measure, dialysis is defined as either CRRT, hemodialysis, or peritoneal dialysis.

¹ <https://pmc.ncbi.nlm.nih.gov/articles/PMC6676729/>

² <https://www.cms.gov/medicare/payment/prospective-payment-systems/acute-inpatient-pps/fy-2025-ipp-pps-final-rule-home-page>

³ J Cardiothoracic Anaesthesia 2024 <https://doi.org/10.1053/j.jvca.2024.06.021>.